

USE FOR LIFTING 2 x 3/4-UNC
(SEE INSTALLATION INSTRUCTIONS)
DO NOT REMOVE
**DO NOT LIFT TOTAL MASS ON
ONE LIFTING POINT ONLY**

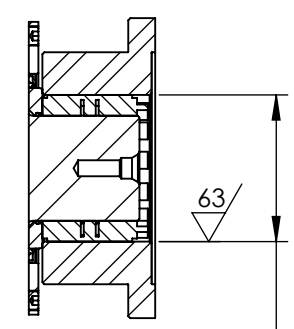
HYDRAULIC MANIFOLD
FOR 2 SPEED SHIFTING

$\phi 25.5^{+0.000}_{-0.003}$
 $\phi 22.48^{+0.000}_{-0.003}$

OIL FILL PORT
ORB-20

ALL STEEL COUPLING
READ AND OBEY INSTRUCTIONS

SECTION A-A



HUB BORE
 $\phi 6.102^{H8 +0.0025}_{-0.0000}$

$\phi 12.5$

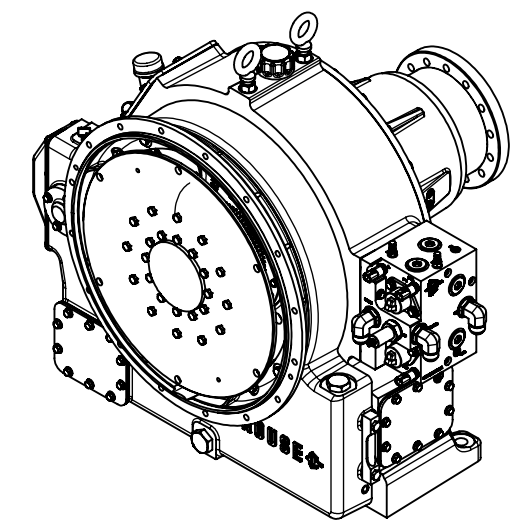
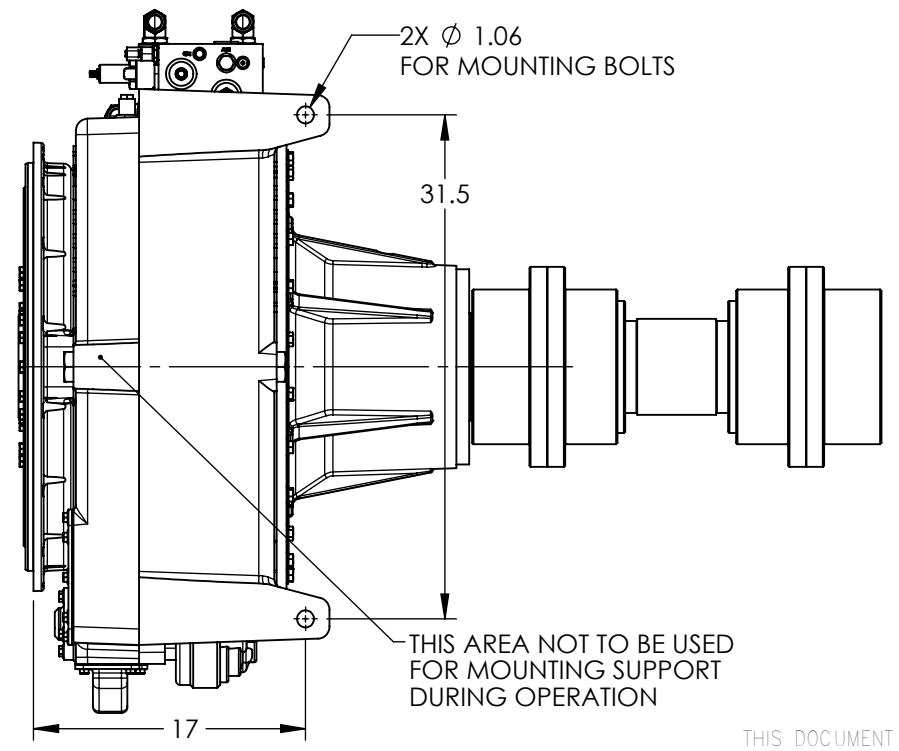
AGMA SIZE-4 COUPLING HUB
AS PER AGMA 9008-B00

1.8
11.9 MOUNTING SURFACE
1.5

17

INSTALLATION INSTRUCTIONS:

1. READ AND OBEY THE INSTRUCTIONS AS STATED IN THE INSTALLATION, OPERATION AND MAINTENANCE MANUAL(S) BEFORE INSTALLATION, START-UP, OPERATION MAINTENANCE AND SERVICE
2. REMOVE BEFORE INSTALLATION:
 - ADHESIVE TAPES FROM ALL HOLES
 - ALL TRANSPORT COVERS
 - RUST PROTECTIVES FROM ALL MOUNTING SURFACES
3. DEGREASE AND DRY ALL MOUNTING SURFACES
4. FOR LIFTING DURING INSTALLATION OR REMOVAL, IT IS NOT RECOMMENDED TO USE CHAINS OR ANY OTHER DEVICE THAT COULD CAUSE DAMAGE
5. FOR PROPER OPERATION THE UNIT MUST BE SECURELY BOLTED TO A RIGID FOUNDATION AND PROPERLY ALIGNED
6. CONNECT ALL ACCESSORIES AND COMPLETE PIPING AND WIRING
7. CHECK ALL FLUID LEVELS AND FILL AS REQUIRED



NOTES:

1. TYPICAL CONFIGURATION SHOWN TO BE USED WITH SAE "0" WET FLYWHEEL HOUSING AND SAE "18" FLYWHEEL
2. ADAPTERS FOR DIFFERENT ENGINES AVAILABLE CONTACT MANUFACTURER FOR DETAILS

DRAWN BY	ST	DATE	15 Aug 2013	SH. SIZE: B
DESIGNED BY	ST	PROJECT	MPD-2.1d	
APPROVED		DWG. TYPE	LAYOUT	
		EST. WEIGHT	2,700 lbs	



THIRD ANGLE PROJECTION UNLESS OTHERWISE SPECIFIED DIMENSIONS ARE IN: INCHES

TITLE/NAME:
UNIT LAYOUT - MPD-2.1d
2 Speed Direct Drive; MPD-2.1d (2013)

SCALE	1:8	DWG No.	550013	REV.	A
SHEET	1 of 1				